

ASSESSMENT OF LAKE TROUT (*Salvelinus namaycush*)  
MERCURY CONCENTRATION ACROSS A GRADIENT OF FOOD WEB  
COMPLEXITY AND ENVIRONMENTAL VARIABLES

by

Montana Gilbert



FACULTY OF NATURAL RESOURCES MANAGEMENT  
LAKEHEAD UNIVERSITY  
THUNDER BAY, ONTARIO

April 2023

ASSESSMENT OF LAKE TROUT (*Salvelinus namaycush*)  
MERCURY CONCENTRATION ACROSS A GRADIENT OF FOOD WEB  
COMPLEXITY AND ENVIRONMENTAL VARIABLES

by

Montana Gilbert  
1098868

An Undergraduate Thesis Submitted in Partial Fulfillment of the Requirements for the  
Degree of Honours Bachelor of Environmental Management

Faculty of Natural Resources Management  
Lakehead University

April 2023

-----  
Dr. Brian McLaren  
Major Advisor

-----  
Mr. Alex Ross  
Second Reader

LIBRARY RIGHTS STATEMENT

In presenting this thesis in partial fulfillment of the requirements for the HBEM degree at Lakehead University in Thunder Bay, I agree that the University will make it freely available for inspection.

This thesis is made available by my authority solely for the purpose of private study and may not be copied or reproduced in whole or in part (except as permitted by the Copyright Laws) without my written authority.

Signature: \_\_\_\_\_

Date: April 25, 2023

### A CAUTION TO THE READER

This HBEM thesis has been through a semi-formal process of review and comment by at least two faculty members. It is made available for loan by the Faculty of Natural Resources Management for the purpose of advancing the practice of professional and scientific forestry.

The reader should be aware that opinions and conclusions expressed in this document are those of the student and do not necessarily reflect the opinions of the thesis supervisor, the faculty, or of Lakehead University.

## ABSTRACT

Gilbert, M.K. 2023. Assessment of lake trout (*Salvelinus namaycush*) mercury concentration across a gradient of food web complexity and environmental variables. 56 pp.

Keywords: aquatic ecology, bioaccumulation, food chain length, freshwater fisheries lake class, lake trout (*Salvelinus namaycush*), mercury concentration

Exposure to mercury has been linked to health risks in both people and wildlife. In Ontario, mercury pollution is to blame for 85% of the consumption restrictions on fish from inland lakes. Heavy metals like mercury accumulate up the food chain. Different rates of contaminant accumulation may be caused by variations in feeding and food web biomagnification. To assess the role of food web biomagnification in an apex predator, four distinct classes of lake trout (*Salvelinus namaycush*) prey with increasing food chain lengths were compared to determine whether differences in food chain length could account for the differences in muscle tissue mercury concentration. The analysis for this study included fish, water chemistry, and mercury concentrations that were collected from the IISD-Experimental Lakes Area (1973-2019) and the Ontario Ministry of Natural Resources and Forestry's Broad-scale Monitoring Program where the Ministry of Environment and Climate Change analyzed the fish tissue. Accounting for variation in fish body size, lake trout mercury concentration cannot be explained by food chain length as predicted, although a significant interaction between body size and lake class suggests there is a positive relationship with body size that varies based on food web class. In attempt to contextualize this result, I examined the possibility that environmental factors, such as lake chemistry (dissolved organic carbon, pH, total dissolved phosphorus), and lake morphometry (i.e. maximum lake depth, surface area) are also associated with variation mercury concentration. All environmental variables examined show a positive correlation with mercury concentration; amongst the variables assessed, dissolved organic carbon (DOC) had the strongest association with fish mercury concentrations. Understanding the biotic and abiotic factors that influence mercury accumulation can help make decisions on fish consumption guidelines and can help further research opportunities.

## CONTENTS

ABSTRACT	v
CONTENTS	vi
TABLES	viii
FIGURES	ix
ACKNOWLEDGEMENTS	x
INTRODUCTION AND OBJECTIVES	1
LITERATURE REVIEW	5
NATURAL HISTORY OF LAKE TROUT	5
ENVIRONMENTAL DETERMINANTS OF LAKE TROUT HABITAT OCCUPANCY	6
BIOLOGICAL DETERMINANTS OF LAKE TROUT HABITAT OCCUPANCY AND IMPORTANCE OF FOOD WEB COMPLEXITY	8
THE CONCEPT OF LAKE CLASSES	10
MERCURY CONCENTRATION IN AQUATIC SPECIES	11
METHODS AND MATERIALS	17
STUDY AREA	17
FISH COLLECTION AND SAMPLING	20
Broadscale Monitoring Program (BsM) Sampling Protocol	20
Experimental Lakes Area (ELA) Sampling Program	21
MERCURY ANALYSIS	22
STATISTICAL ANALYSIS	23
RESULTS	25
DISCUSSION	29
CONCLUSION AND RECOMMENDATIONS	33

APPENDICES	43
APPENDIX I	44
APPENDIX II	46

## TABLES

Table	Page
Table 1. Classification of lake class schemes as described as Rasmussen et al. 1990 with the addition of Class 1.5	3
Table 2. Classification of lake class schemes as described as Rasmussen et al. 1990.	11
Table 3. Average mercury concentration of lake trout from Ontario lakes with different pelagic communities with the average environmental measurements from each lake and total fish sampled.	17
Table 4. Summary of lake class values (number of lakes and individual samples analyzed) and average mercury concentration with 95% quantile and standard deviation values.	25



## FIGURES

Figure	Page
1. Lakes sampled in Ontario's broadscale monitoring program and IISD-Experimental Lakes Area for this study.	20
2. Comparison of log-transformed Hg concentration with total length across lake classes.	26
3. Comparison of the influence of environmental variables (DOC, TDP, pH and maximum depth) on mercury concentrations across lake classes.	27
4. Principal component analysis (PCA) biplot of environmental variables and mercury concentration across lake classes.	28

## ACKNOWLEDGEMENTS

It would not have been possible to navigate writing this thesis without the help and support of many people. Foremost, I acknowledge and thank Alex Ross, Ph.D. Candidate for being not only my second reader but for his support and recommendations throughout the completion of my thesis. His expertise was a great resource while completing my study, it would have been impossible without him.

Secondly, thank my respected professor and supervisor, Dr. Brian McLaren, Faculty of Natural Resources Management, Lakehead University. Profound thank you for my thesis advisors for their outstanding patience as well as for sharing their passion for ongoing academic pursuits and dedication which align with the faculty at Lakehead University with whom I have had the privilege to meet and study under.

I thankfully acknowledge the support and inspiration that I received from Dr. Michael Rennie and all the members of Lakehead University's Community Energetics and Ecology (CEE) Laboratory; you have welcomed me with open arms and have always been willing to help when needed.

Also, many unmentioned individuals who were involved in the MNRF's BROADSCALE Fisheries Program and IISD-Experimental Lakes Area Inc. (IISD-ELA) also deserve my appreciation since all their hard work in the field and the lab formed the roots of this project.

Lastly, but arguably most importantly I also want to thank my parents Robert and Lana Gilbert for their endless love and support. They have both been my number one fans throughout my life, pick me up when I am down and kicked me into gear when I needed it.

## INTRODUCTION AND OBJECTIVES

Natural ecosystems are composed of hundreds to thousands of species and interactions between consumers, producers, and resources. Food webs disperse consumption and productivity across the web (Polis and Strong 1966). A food chain is a group of organisms that are consumed in a linear order, passing nutrients and energy along the way. At the base of the food chain are primary producers or autotrophs, which are usually plants. Primary consumers are generally herbivores, secondary consumers are carnivores which consume the primary consumers, tertiary consumers are carnivores that consume other carnivores, and apex consumers are the organisms at the top of the food chain. Each trophic level indicates how many stages of consumption separate an organism from the initial energy source of the food chain, such as light.

Fish typically go through multiple diet changes as they grow, in part because increases in body size allow them to eat larger prey items. The ability of a fish to switch to larger prey is largely influenced by the type and availability of its prey, and as a result, by the food web's structure. A change in diet requires a change in habitat use in order to access the new food source. The shift to larger prey typically results in higher growth rates, which may be caused by increased food intake rates, reduced energy expenditure, or a combination of the two processes (Werner and Gilliam 1984). If larger prey is not available, then the fish cannot shift its diet, resulting in its moderate growth compared to others that shift their feeding.

In many North American Lakes, lake trout (*Salvelinus namaycush*) are top predators. Occupying oligotrophic temperate lakes, the species is an effective indicator of ecosystem health (Scott and Crossman 1973; Kiriluk et al. 1995). Lake trout require

cold and well-oxygenated water, a trait which significantly reduces available habitat during summer when lakes are thermally stratified. Water temperature and dissolved oxygen (DO) are thought to be the main factors influencing habitat selection by lake trout which are often found at depths corresponding to temperatures of 8-12 °C and DO > 4 or 6 – 7 mg·L<sup>-1</sup> (Martin and Olver 1980; Evans 2007; Plumb and Blanchfield 2009). Thermal stratification sends fish into deeper waters and restricts access to littoral forage fish in lakes lacking pelagic fish (Vander Zanden and Rasmussen 1996), increasing lake trout reliance on zooplankton prey (Martin 1966), particularly for lakes lacking pelagic forage fish. Compared to piscivorous populations, lake trout that are mostly planktivorous throughout the summer have slower growth, smaller body sizes, and inferior growth efficiency (Martin 1966; Pazzia et al. 2002). In addition to seasonal variations, the diet of lake trout differs depending on their age. While younger lake trout typically eat zooplankton and macroinvertebrates like freshwater shrimp or midges (*Mysis diluviana* and *Chaoborus*) older lake trout typically eat smaller fish species when they are available, such as minnows, yellow perch (*Perca flavescens*), lake whitefish (*Coregonus artedii*), cisco (*Coregonus* spp.), or even their own young (Gunn and Pitblado 2004). When possible, as lake trout increase in length, they typically switch from a diet of *Mysis* (respectively; henceforth known as *Mysis*), yellow perch and sculpin to a diet of larger prey fish (Trippel and Beamish 1993).

To understand how the availability of pelagic prey sources impacts mercury contamination it is important to compare lake trout in the presence or absence of common cold water prey species. In this study, food web complexity can be categorized using a lake trout class scheme, similar to that of Rasmussen et al. (1990). While all lake

trout lakes have small pelagic zooplankton, many of them lack species that serve as intermediate trophic levels such as *Mysis*, a cold-water invertebrate planktivore and pelagic forage fish such as lake herring (*Coregonus artedii*), lake whitefish (*Coregonus clupeaformis*), or rainbow smelt (*Osmerus mordax*). Lakes without *Mysis* or pelagic forage fish are referred to as Class 1 lakes, lakes with forage fish but no *Mysis* are Class 2, and those with both *Mysis* and pelagic forage fish are Class 3 (Rasmussen et al. 1990). Intermediate trophic levels provide additional links in the food chain; longer food chains potentially result in increased bioaccumulation of metals or contaminants, such as mercury (Oliver and Niimi 1988; Evans et al. 1991). While not present in previous work, I will add a lake category for lakes with *Mysis* present and pelagic fish absent which will be referred to as Class 1.5 (Table 1). This new class is an extension of food chain length and can potentially aid in explanation of contaminant bioaccumulation.

Table 1. Classification of lake class schemes as described as Rasmussen et al. (1990) with the addition of Class 1.5.

Lake class	Pelagic prey fish	<i>Mysis</i>
1	Absent	Absent
1.5	Absent	Present
2	Present	Absent
3	Present	Present

Mercury toxicity is a major threat to people and wildlife, with methylmercury being the most biologically available and severe form (Celo et al. 2006). In Ontario, mercury pollution is responsible for 85% of prohibitions on human fish consumption from inland lakes (MOECC 2022). Mercury toxicity and poisoning are made more challenging by the bioaccumulation and biomagnification of mercury in food webs.

Apex predators like lake trout have the largest concentrations in their body tissues, in part because they frequently eat food that contains a lot of mercury, and they live longer than forage fishes (Kamman et al. 2005; Swanson and Kidd 2010). Many processes operating at various scales, ranging from the individual fish to the local climate, contribute to the bioaccumulation of fish mercury (Eagles-Smith et al. 2016). Mercury concentrations in freshwater fish are influenced by physiochemical elements connected to lake morphometry and water chemistry (Wren et al. 1991). However, lake trout mercury concentrations are highly variable; this research will address the role of prey assemblages and environmental variables in mercury accumulation in lake trout.

## HYPOTHESIS

I hypothesized that changes in food chain length will account for differences in lake trout mercury levels. I predicted that lake trout mercury concentrations would be lowest where no *Mysis* or pelagic forage fish were found (Class 1) and highest levels where both are present (Class 3). Larger fish will tend to accumulate more mercury due to prey body size and bioaccumulation. As several aspects of lake chemistry have been linked to higher levels of accumulation in the past, I expect that these additional environmental variables will contribute to variation in the concentration of mercury.

## LITERATURE REVIEW

## NATURAL HISTORY OF LAKE TROUT

Lake trout (*Salvelinus namaycush*), a species in the Salmonidae family, have specific habitat requirements and dietary preferences common to cold-water fishes. Lake trout are native to the northern parts of North America, principally Canada, but also Alaska and, to some extent, the northeastern United States, and they have been introduced elsewhere (Martin and Olver 1980; Page and Burr 1991). The range of lake trout is most closely associated with the limits of the Pleistocene glacier in North America (Lindsey 1964). Lake trout followed the massive, cold waters that glaciers left behind, which is where they can be found today. In the southern portions of its distribution in Canada, lake trout are primarily found in deep lakes (i.e., with maximum depths greater than 12.2 m), while in the northern half, particularly in the Territories, they can be found in shallow lakes and rivers (Scott and Crossman 1973).

Lake trout grow slowly and mature late, on average between 6-7 years old but maturity can be as old as 13 years old (Tibbits 2007; Scott and Crossman 1973). They are typically elongate in shape, with total asymptotic length ranging from 381-508 mm. Lake trout mass can exceed 25 kg in many Canadian lakes but in most inland lakes the average size caught by anglers is less than 4.5 kg (Scott and Crossman 1973). Lake trout like cold, oxygenated water, typically between  $> 4 - 7 \text{ mg}\cdot\text{L}^{-1}$ , which greatly reduces the quantity and or quality of habitat that is accessible when lakes are thermally stratified (Blanchfield et al. 2009; Plumb and Blanchfield 2009). Compared to piscivorous populations, lake trout populations that are mostly planktivorous throughout

the summer have slower growth, smaller body sizes, and inferior growth efficiency (Martin 1966; Pazzia et al. 2002).

Dietary preferences of lake trout vary based on their age and on what prey are available. As a result of the limited postglacial spread of prey taxa and lake characteristics (such as depth), the length of the food chains leading to lake trout is widely varied, causing their dietary preferences to vary as well (Rasmussen et al. 1990; Dadswell 1974). Younger lake trout feed primarily on small invertebrates, while adults consume larger prey, like other fishes (Gunn and Pitblado 2004). Zooplankton are present and available to lake trout in all lakes where they are found. However, many lake trout lakes lack preferred intermediate trophic-level prey items, including prey species known as "pelagic forage fish" (smelt, cisco, and whitefish) and *Mysis* (Vander Zanden and Rasmussen 1996). Although none of these species, especially whitefish, is strictly pelagic, I will continue to refer to them as "pelagic forage fish" to maintain continuity with earlier research.

## ENVIRONMENTAL DETERMINANTS OF LAKE TROUT HABITAT OCCUPANCY

Oxy-thermal structure is the main determinant of lake trout habitat occupancy, which changes predictably across seasons. Water temperature and dissolved oxygen concentration (DO) are thought to be the main factors influencing habitat selection by lake trout (Gibson and Fry 1954; Gunn and Pitblado 2004). From early observations, it was noted that lake trout preferred a narrow range of temperatures between 8-12 °C (Ferguson 1958; Coutant 1977; Olson et al. 1988; Christie and Regier 1988). More



recent observations have indicated a broader and colder thermal preference of 5-15°C (Sellers et al. 1998) or < 8°C (Bergstedt et al. 2003). DO thresholds of > 4 mg·L<sup>-1</sup> or 6-7 mg·L<sup>-1</sup> are commonly used to characterize lake trout habitat requirements (Martin and Olver 1980; Evans 2007; Plumb and Blanchfield 2009). Although these two parameters are rarely measured *in situ*, management organizations frequently use them to establish standards for the preservation of fish and fish habitat, which explains a large portion of the difference between temperature and DO ranges (Martin and Olver 1980).

Lake trout are considered stenotherms, indicating that their body temperature closely mirrors their surroundings. To achieve optimal physiological function, lake trout must stay within the narrow temperature ranges appropriate to the species (Magnuson et al. 1979; Portner and Knust 2007). Lakes thermally stratify when water in a lake forms distinct layers through heating from the sun and wind. Lakes with cold water generally experience thermal stratification in north-temperate regions throughout the summer, a time when lake trout inhabit the metalimnion (Sellers et al. 1998). In stratified lakes, oxygen deficits in portions of the epilimnion and hypolimnion render the lake unsuitable to lake trout during periods of thermal stratification. Although thermal stratification restricts habitat for cold-water fishes during this time, it is an essential characteristic of north-temperate lakes that keeps the right oxy-thermal habitat available in the summer (Gibson and Fry 1954; Christie and Regier 1988). Lakes would not be able to maintain cold-water species if they mixed completely in the summer since the water would exceed their preferred temperature of >15°C and significantly raises the metabolic costs of occupying warmer and typically littoral habitats.

## BIOLOGICAL DETERMINANTS OF LAKE TROUT HABITAT OCCUPANCY AND IMPORTANCE OF FOOD WEB COMPLEXITY

Ecological research has shown that food webs contain a multitude of species-to-species interactions, connecting via multiple links of varying strength species in the same and in different habitats (Vander Zanden and Rasmussen 1996). Food webs are crucial to our comprehension of the stability and function of ecosystems. Complexity, also known as connectance, is a crucial component of food web structure; it is the number of food web links expressed as a proportion of all possible links (Beckerman et al. 2006).

Many factors affect the structure of food webs and the life history traits of fish (Pazzia et al. 2002). According to fish growth models, foraging expenses rise when a predator's size increases in relation to its prey because it needs to find and eat more prey to meet its energy needs (i.e., decreased growth efficiency; Kerr 1971; Giacomini et al. 2013). Fish feeding on smaller prey are predicted to have higher foraging expenses as their body size increases stratification. Lake trout typically inhabit oligotrophic lakes, characterized by low nutrients and productivity. Salmonids in that live northern lakes have a short growing season and in response typically grow slower and live longer lives (Johnson 1972). The capacity of a lake trout to choose habitat can also be influenced by harvest pressure, since harvest causes behavioural changes such as individual boldness or shyness (Uusi-Heikkila et al. 2008). Behavioural changes can cause fish to be less effective foragers, have reduced mating success, and possibly also have lower parental caregiving abilities.

Cold-water predators exhibit seasonality in their foraging in response to stratification, relying on pelagic energy sources like zooplankton and macroinvertebrates (such as *Mysis* or *Chaoborus*) when surface and littoral waters are too warm in the summer. Lake trout tend to feed in the littoral zone when they are cooler in the spring and fall (Martin 1952; Guzzo et al. 2017). When thermal stratification occurs, portions of the epilimnion and hypolimnion become unavailable, making the thermocline a preferable foraging habitat. In the summer, lake trout reduce their use of littoral habitat and occupy deep pelagic waters (Guzzo et al. 2017). Lake trout and many other predatory fish in north-temperate lakes are guided in their foraging behaviour by fluctuations in prey density and seasonality. Lake trout populations must have suitable prey species present throughout the year in their thermal range for rapid growth (Scott and Crossman 1973; Pazzia et al. 2002). Lack of adequate prey can prevent fish from switching to larger prey, affecting the content, and structure of the food web (Martin 1952).

In both littoral and pelagic environments, freshwater fish encounter prey populations with uneven size spectra, little to no biomass, and mismatched abundance, all of which can affect population growth rates (Werner and Gilliam 1984). Typically, oligotrophic lakes consist of few species of zooplankton, invertebrates, and intermediate species such as *Mysis* or forage fish (Ryder and Johnson 1972). When *Mysis* are present, they can play a significant role in the diet of young lake trout, but diet of larger individuals diets are often dominated by minnows (Cyprinidae), cisco (*Coregonus artedii*), slimy sculpin (*Cottus cognatus*), and yellow perch (*Perca flavescens*) when they

are available. *Mysis* can also serve as a major food source for older lake trout if they are highly abundant (Konkle and Sprules 1986; Trippel and Beamish 1993).

## THE CONCEPT OF LAKE CLASSES

To directly assess how the presence and/or absence of key prey items affects predator traits (such as mercury accumulation), a categorical grouping of prey availability to lake classes can be useful. The idea of lake classes is based on trophic levels, whereby species are grouped into trophic level groupings and then handled as distinct categories in subsequent modeling (Vander Zanden and Rasmussen 1996). An effective example of lake classes being used to describe population-level differences across a gradient of food web complexity was in the work of Rasmussen et al. (1990). Rasmussen described lake classes by dividing lake trout lakes into groups based on the presence or absence of simple intermediate prey species (Table 2). Rasmussen's study assessed how food chain length explains differences in polychlorinated biphenyls (PCBs), which are contaminants within aquatic ecosystems (Rasmussen et al. 1990). The study found that PCB levels in lake trout increase with the length of the pelagic food chain; trout from the shortest food chains (Class 1 lakes) had the lowest PCB levels, and those from the longest food chains (Class 3) had the highest levels. The results provided evidence of food chain biomagnification, although the authors did not comprehensively assess all combinations of lake class types in their study.

Table 2. Classification of lake class schemes as described as Rasmussen et al. (1990).

Lake Class	Pelagic Prey Fish	<i>Mysis diluviana</i>
1	Absent	Absent
2	Present	Absent
3	Present	Present

## MERCURY CONCENTRATION IN AQUATIC SPECIES

Mercury is categorized as a neurotoxin that poisons both humans and wildlife by penetrating organisms through the absorption of different forms of mercury (Celo et al. 2006). The symptoms of mercury poisoning in people can range from neurological impairments, respiratory problems, fertility issues, cardiovascular problems, immune system compromise, and fetal abnormalities, to death (Ullrich et al. 2001; Lourie 2003; Gonzalez-Raymat et al. 2017). The aquatic ecosystem is a main source of mercury exposure for humans and wildlife since methylmercury is stored in fish muscle tissue (MOECC 2022).

Elemental mercury (Hg<sup>0</sup>) can be introduced into the environment by both natural sources and anthropogenic activities. Natural sources include volcanoes, forest fires, oceanic emissions, and the natural degassing of the earth's crust. Present-day anthropogenic sources of global mercury (Hg) have been studied for more than a decade (Streets and Zhang 2009). Abiotic or biotic processes have the ability to methylate elemental mercury, which can then change inorganic mercury into the hazardous form of methylmercury that is carried by water bodies (Celo et al. 2006). Methylmercury is the most prevalent and severe form of mercury toxicity. The numerous complex interactions within the mercury cycle involve methylation, demethylation, and biotic

processes. Methylmercury bioaccumulates in aquatic ecosystems by binding to tissues within organisms (Ullrich et al. 2001).

Bioaccumulation occurs when contaminants are taken up by the organism faster than they can be eliminated (Lourie 2003). Further, biomagnification is when increasingly larger amounts of mercury accumulate with increasing trophic levels. As a result, top predators, like lake trout, have high levels of methylmercury in their body tissue because of biomagnification increasing with food chain length, and individual bioaccumulation because of slow growth rates and contaminated prey (Kamman et al. 2005).

Mercury is a dangerous global contaminant due to its widespread distribution and deposition into terrestrial and aquatic systems (Fitzgerald et al. 1998). Several variables affect the amount of mercury that accumulates in freshwater fishes, including fish size, waterbody pH, dissolved organic carbon, watershed features, algal productivity, and zooplankton community structure (Driscoll et al. 1994; Kamman et al. 2003; Chen et al. 2005). In response to bioaccumulation and biomagnification, mercury concentrations in fish tend to increase with fish age, size, and trophic position. While older larger fish tend to have higher mercury, mercury will usually, but not always, decrease with faster growth and greater body condition (Evans et al. 2005). The concentration of contamination rises with each level of a food chain as it is consumed by the producer and gradually transferred to the top of that food chain (Fitzgerald et al. 1998).

Due to the high toxicity of mercury, Health Canada has set a guideline for the maximum average level of mercury in fish for commercial sale at 0.5 parts per million

(ppm) for human consumption (MOECC 2022). In addition, guidelines have been set on consuming herring, salmon, smelt, trout, and lake whitefish, with a suggested limit for consumption is approximately 150 grams per week for the general population while children are recommended to eat even less (MOECC 2022). Previous studies have found that whole-body values of 10–20  $\mu\text{g/g}$  can be lethal to most fish (Niimi and Kissoon 1994). Fish and potentially other aquatic organisms may be affected chronically by whole body mercury concentrations of 1- 5  $\mu\text{g/g}$ . Low levels of mercury pollution can indirectly impact fish populations by disrupting physiological processes as opposed to neurological impairment and death that can be brought on by high contamination levels (Crump and Trudeau 2009). Previous studies on Atlantic salmon and Rainbow trout showed that mercury exposure of 10  $\mu\text{g/L}$  of methylmercury or muscle content of above 0.6  $\mu\text{g/g}$  has been linked to brain lesions, oxidative stress, decreased activity, and/or rendered inactive gonadotrophic hormones, which are released from the pituitary in fish. Mercury contamination can also affect reproductive function; previous studies have found a threshold of 0.2  $\mu\text{g/g}$ , and concentrations exceeding the limit affect the control of the annual cycle of gonadal growth, ovulation in females, sperm release in males, and production of sex steroids in both sexes that cause impotence (Crump and Trudeau 2009; Berntssen et al. 2003; Breton et al. 1998). These biological implications occur after long-term dietary exposure to mercury.

## ENVIRONMENTAL VARIABLES

Lake characteristics and water chemistry are two factors that can influence mercury methylation and demethylation processes (Garcia and Carignan 2000). Fish

mercury accumulation is influenced by a number of environmental and biological factors, such as pH and trophic position (Cabana et al. 1994). Based on their importance in previous literature, this study focused on four main variables: dissolved organic carbon (DOC), pH, total dissolved phosphorus (TDP), and lake morphology.

At the landscape and biogeochemical levels, there are substantial connections between the cycles of mercury and carbon. Dissolved organic carbon (DOC) may bind to a variety of trace metals, including mercury (Mason 2013). Many studies have revealed a strong linear association between DOC concentrations in water and total mercury (THg) or methylmercury (MeHg) concentrations in freshwater environments (Grigal 2002; Riscassi and Scanlon 2011; Stoken et al. 2016). These studies and others suggest that DOC may have a mitigating effect on the production and/or bioaccumulation of MeHg in water. Many of the mechanisms for the mobilization and transformation of mercury (Hg) and DOC to freshwater ecosystems have been identified (Lavoie et al. 2019). In freshwater ecosystems, mercury is carried from the catchment basin and has the potential to be methylated while travelling through marshes, streams, rivers, and lakes, where there is a strong but variable coupling between carbon and mercury cycles. This coupling is influenced by regional factors like geography, time, and human activity, and has implications for understanding biogeochemical processes that are also rapidly changing in response to climate change (Lavoie et al. 2019).

Previous studies have been conducted to determine if pH will directly alter the bioaccumulation of MeHg in fish, but the findings are inconsistent. Nonetheless, the bulk of studies revealed that lakes with low pH typically have fish with higher mercury concentrations (McMurtry et al. 1989; Greib et al. 1990; Suns and Hitchin 1990; Wiener



et al.1990). Concern over the ecological effects of acid deposition has heightened interest in the function of pH and alkalinity in mercury accumulation. Fish in lakes with lower pH values typically have greater amounts of methylmercury, which increases the bioavailability of mercury (Garcia and Carignan 2000; Weiner et al 2006).

It has long been believed that phosphorus, an essential nutrient for the development of aquatic plants and algae, is a major factor in the overall productivity of freshwater ecosystems (Gov. of Can. 2015). An increase in phosphorus can expedite fish growth and reduce fish mercury through growth dilution (Rypel 2010). According to one study, aquatic ecosystems are more vulnerable to mercury contamination in fish when fish have reduced growth rates, which are linked to low growth efficiency. With an increased metabolism, fish tend to consume food at faster rates that can increase mercury accumulation (Ward et al. 2010). A multi-lake study from northeastern North America found a link between higher mercury bioaccumulation in food webs and relatively low lake productivity (Chen et al. 2005). A Canadian lake study (Kidd et al. 2012) discovered a positive relationship between phosphorus levels and biomagnification of total mercury in food webs, and fish communities. The amount of methylmercury in fish can also be decreased by increasing lake primary productivity, which can occur when mercury levels in lake food webs are diluted (Pickhardt et al. 2002).

The ratio between methylation and demethylation rates is strongly temperature dependent (Bodaly et al. 1993). Temperature-dependent increases in biological activity and chemical reaction rates lead to an increase in the rate of mercury methylation (Bigham et al. 2016). According to Ullrich et al. (2001), the rate of mercury methylation

often peaks in aquatic systems during summer, demonstrating the significant impact of temperature on overall Hg methylation. Temperature in turn is related to lake surface area and surface depth; small lakes are generally shallower, and typically respond more quickly to atmospheric temperature, making them warmer in the summer and colder in the winter. More total mercury accumulation in lake trout tissues is caused by higher water temperatures, which favour methylmercury transformations over demethylation (Bodaly et al. 1993).

## METHODS AND MATERIALS

## STUDY AREA

Fish and water samples were collected from the Ontario's Broadscale Monitoring (BsM) Program and from the long-term dataset collected at the IISD-Experimental Lakes Area (ELA) located in Northwestern Ontario (Figure 1). The BsM Program collaborated with the Ontario Ministry of Natural Resources and Forestry and the Ministry of the Environment and Climate Change to analyze samples and subsequently develop databases of mercury contaminant concentrations in fish across Ontario (OMNR 2009). A number of lakes were also selected from the IISD-ELA to provide additional samples to ensure adequate numbers of samples for each lake class (Class 1, 1.5, and 3). A total of 64 lakes were selected to obtain data from mercury analysis and on environmental variables from (Table 3).

Table 3. Average mercury concentration of lake trout from Ontario lakes with different pelagic communities with the average environmental measurements from each lake and total fish sampled.

Lakes	Mercury Concentration ( $\mu\text{g/g}$ )	Dissolved organic carbon (DOC)	Maximum depth (m)	pH	Total dissolved phosphorus (TDP)	N Fish
CLASS 1 Lakes ( <i>Mysis</i> absent; pelagic forage fish absent)						
223	0.410	4.274	14.000	6.123	2.582	31
260	0.336	5.100	14.000	7.023	2.731	22
382	0.375	7.362	13.000	6.753	2.621	27
626	0.269	5.291	13.200	6.650	2.671	30
Cliff Lake	0.384	4.700	12.000	7.719	4.299	17
Fletcher Lake	0.059	4.200	21.300	6.570	7.300	10
Watabeag Lake	0.513	6.250	36.600	7.630	11.350	34
Arithmetic Mean	0.335	5.311	17.729	6.924	4.793	
Standard Deviation	0.142	1.141	8.873	0.579	3.364	
					Total	171

Lakes	Mercury Concentration ( $\mu\text{g/g}$ )	Dissolved organic carbon (DOC)	Maximum depth (m)	pH	Total dissolved phosphorus (TDP)	N Fish
CLASS 1.5 Lakes ( <i>Mysis</i> present; pelagic forage fish absent)						
224	0.293	3.118	27.000	6.845	2.852	144
373	0.338	3.974	21.000	7.031	4.163	59
375	0.336	6.220	27.000	7.309	3.981	65
442	0.333	6.395	18.000	6.891	2.937	24
Burchell Lake	0.516	4.900	74.700	7.275	3.100	41
Cry Lake	0.292	2.400	47.600	7.200	13.100	43
Grouse Lake	0.341	4.299	38.400	7.339	8.900	14
North Lake	0.186	3.300	36.000	7.380	13.600	20
Squeers Lake	0.192	3.899	33.600	7.290	9.300	26
Twinhouse Lake	0.595	7.500	15.000	6.610	5.700	18
Walotka Lake	0.462	6.050	23.000	7.095	4.300	45
Arithmetic Mean	0.353	4.732	32.845	7.115	6.539	
Standard Deviation	0.126	1.611	16.898	0.246	4.030	
					Total	499
CLASS 2 Lakes ( <i>Mysis</i> absent; pelagic forage fish present)						
Aylen Lake	0.819	3.450	67.100	7.000	3.850	48
Bark Lake	0.500	4.800	87.500	6.545	7.050	24
Bella Lake	0.234	2.700	36.600	6.800	7.200	31
Bending Lake	0.797	8.000	45.800	6.790	5.900	10
Cobre Lake	0.100	2.300	61.600	7.300	1.700	2
Eels Lake	1.020	4.800	29.900	7.100	7.300	22
Emerald Lake	0.178	2.250	48.800	7.000	3.400	50
Kawagama Lake	0.379	3.200	77.000	6.580	3.600	74
McKenzie Lake	1.662	5.750	27.400	6.685	6.250	18
Opeongo Lake	0.560	4.800	51.100	7.050	4.800	47
Smoke Lake	0.274	3.700	56.100	6.810	3.300	35
Arithmetic Mean	0.593	4.159	53.536	6.878	4.941	
Standard Deviation	0.460	1.714	18.912	0.233	1.906	
					Total	361
CLASS 3 Lakes ( <i>Mysis</i> present; pelagic forage fish present)						
239	0.713	6.489	30.000	6.905	3.100	21
468	0.400	NA	29.000	NA	NA	49
Arrow Lake	0.394	2.950	54.900	7.289	5.050	90
Bear Lake	0.242	2.799	54.000	7.049	7.299	20
Black Sturgeon Lake	1.425	11.050	52.400	7.570	6.350	28

Lakes	Mercury Concentration ( $\mu\text{g/g}$ )	Dissolved organic carbon (DOC)	Maximum depth (m)	pH	Total dissolved phosphorus (TDP)	N Fish
Carling Lake	0.582	12.350	40.900	7.190	11.600	18
Clear (Watt) Lake	0.253	4.400	40.000	6.920	7.000	36
Crystal Lake	0.283	2.600	47.000	6.950	4.900	60
Eva Lake	0.497	7.300	54.900	7.269	12.650	50
Indian Lake	0.782	5.300	36.000	7.230	8.950	5
Kashabowie Lake	0.710	10.550	35.000	6.920	8.650	2
Lake Bernard	0.341	3.366	47.900	7.033	10.866	16
Lake Joseph	0.322	2.962	92.000	6.886	5.650	138
Lake Manitou	0.193	4.299	49.100	8.009	5.200	184
Lake Muskoka	0.677	4.300	66.500	6.700	7.500	86
Lake Rosseau	0.569	3.799	89.000	6.870	5.516	116
Lake Temagami	0.332	2.950	75.900	6.980	4.800	68
Larder Lake	0.345	5.700	33.500	7.635	8.300	67
Long Lake	1.398	9.750	186.100	7.925	10.650	74
Longlegged Lake	1.037	8.850	35.400	7.175	19.600	28
Lower Manitou Lake	0.440	5.300	81.000	7.265	5.950	25
Mameigwess Lake	0.532	2.900	50.000	7.420	5.250	65
Muskrat Lake	0.429	6.900	64.000	8.195	39.600	42
Northern Light Lake	0.197	9.900	39.700	7.030	10.550	14
Nym Lake	0.728	5.100	37.200	6.870	6.600	6
Obonga Lake	2.900	8.850	71.700	6.950	6.050	2
Pickrel Lake	0.637	6.600	74.700	6.950	6.750	80
Round Lake	0.762	5.750	54.900	7.185	7.650	70
Savant Lake	0.815	7.550	53.000	7.155	6.000	10
Skeleton Lake	0.367	1.700	61.000	7.000	2.700	76
Sturgeon Lake	0.823	6.050	93.000	7.385	6.500	15
Titmarsh Lake	0.789	6.149	49.400	6.990	5.700	76
Trout Lake	0.918	4.500	47.300	7.435	5.500	39
Trout Lake	0.349	3.100	69.200	7.144	5.100	86
Twelve Mile Lake	0.308	3.300	27.500	7.005	5.349	74
Arithmetic Mean	0.643	5.747	57.803	7.191	8.202	
Standard Deviation	0.497	2.770	28.712	0.344	6.388	
Total						1836

With a total of 2,867 samples, 2,770 samples were previously analyzed with results provided and the additional 97 samples were analyzed during the duration of this thesis to provide supplementary results for the variety of lake classes (see Appendix I and II). Mercury samples from ELA were collected between 1972 and 2022, and samples from BsM between 1993 and 2019.

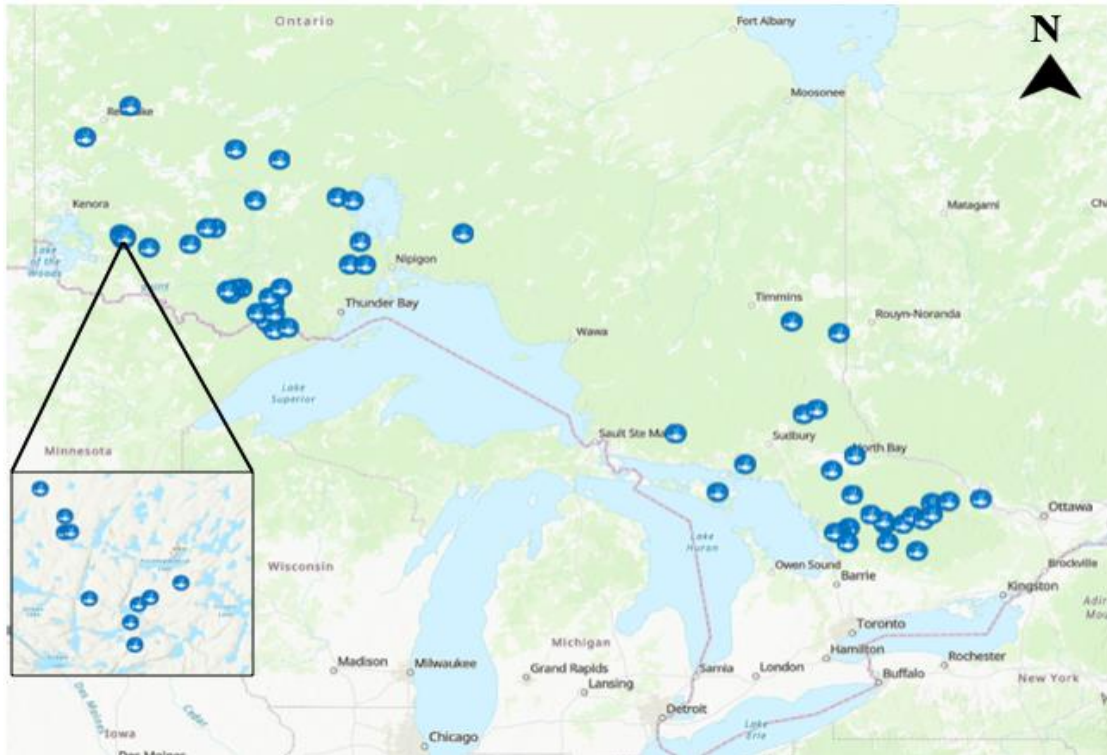


Figure 1. Lakes sampled in Ontario's Broad-scale Monitoring Program and IISD-Experimental Lakes Area for this study.

## FISH COLLECTION AND SAMPLING

### Broad-scale Monitoring Program (BsM) Sampling Protocol

In order to track the condition of Ontario's inland lakes, the Ontario Ministry of Natural Resources (OMNR) developed the Broad-scale Monitoring (BsM) program in 2008 (OMNR 2009). To reduce sample bias, a random stratified data collection was used. Beginning in late May, when the water surface temperature reaches 18 °C or

above, netting is carried out (Sandstorm et al. 2013). Field collection ends when surface temperatures falls below 18 °C.

A large mesh gillnet (known as a North American, NA1) is a standard for sampling angler harvested freshwater species in North America, with eight different mesh sizes per gang (stretch measurements: 38, 51, 64, 76, 89, 102, 114, and 127 mm) is used to catch fish (Sandstorm et al. 2011). Every depth stratum and area of the lake received equal consideration. The nets are normally set between 13:00 and 17:00 hours and left overnight before being taken down between 08:00 and 11:00 hours the next day. The minimum and maximum immersion times for large nets and small nets, respectively, are sixteen and twenty-two hours, and twelve and twenty-two hours, respectively (Sandstorm et al. 2013). Each fish's measurements, including length, weight, age estimation (from scales and otoliths) and sample site, are noted. A tissue sample from the dorsal muscle tissue is collected to analyze for heavy metals including mercury. A sample size of no less than 100 grams is necessary. Guidelines on the recommended eating portions and frequency of fish consumption are created using the information gathered.

#### Experimental Lakes Area (ELA) Sampling Program

The fish program at IISD- Experimental Lakes Area monitor the health of fish species by sampling fish using various methods. In order to determine population abundance and structure in many of the lakes, IISD-ELA staff employ mark-recapture in the spring and fall. Trap nets are used during spring and in the fall, when 38 mm short-set gillnets (10–20 min) are added to trap net samples to catch lake trout on spawning

shoals just after dusk. Fish were caught in all lakes using a minimum of two Beamish-style trap nets during the spring and autumn sample periods (Rennie et al. 2019). There are two different kinds of trap nets: those with a central lead that is positioned perpendicular to the shore (Beamish 1972), and those without a central lead that have one wing tied to the shore and positioned roughly parallel to the shoreline in order to catch fish moving in a single direction. The mesh size of trap nets used is approximately 3 mm, with a weekly cycle of 4-6 weeks, emptied every 2-5 days depending on the water temperature. The number and size of each fish caught in the nets is recorded (Rennie et al. 2019). Captured fish are measured for length, weight, and age estimation (from a fin ray clip), and tissue samples are taken from the dorsal muscle to use for laboratory testing.

## ENVIRONMENTAL SAMPLES

Environmental variables were taken from each lake in this study, including dissolved oxygen, temperature, water chemistry, and lake morphology (surface area, minimum and maximum depth). Water samples from the BsM lakes were sent to the Ministry of the Environment and Climate Change for chemical analyses to determine pH, total dissolved phosphorus (TDP), and dissolved organic carbon (DOC).

## MERCURY ANALYSIS

A total of 2,867 samples were evaluated; 2,770 samples had findings from prior analysis; the remaining 97 samples were analyzed over the course of this thesis to offer additional data for the various lake classes (see Appendix I and II). The 97 samples were



from 1984 to 2022, all of which were collected from IISD-ELA. These samples were analyzed using Milestone's Direct Mercury Analyzer (DMA 80). The DMA was calibrated, primed, and operated following the EPA method 7473 (Peterson et al. 2015).

The samples were quality controlled by including sample blanks and standard reference materials. Every five samples were subjected to a duplicate run for quality control, two blanks, and a standard reference material (SRM). TORT-3 (lobster hepatopancreas and fish protein) was used as the SRM to evaluate ongoing precision of the DMA. In each sample run (which contained up to 20 mercury samples) completed, the standard's mean estimations ranged between 0.27 - 0.29 mg/kg, which is within the SRM's 0.292 ± 0.022 mg/kg permitted ranges. To assess lake trout mercury concentrations, a small piece of muscle tissue was removed from the dorsal muscle with a scalpel in order to prepare the sample for examination. Using a microbalance on a metal weigh boat, the sample was weighed, and the results were entered into the DMA program. The cut sample typically weighed 0.06 to 0.09 g. The machine's slots were filled with each weigh boat containing the weighted sample. The analyzer ran until it was finished, usually taking six hours. The results were then saved to an Excel file. Any sample that fell outside of the acceptable range because of the muscle's abnormally high or low mercury concentration was rerun to assure reliable results. Blanks on the DMA were accepted if they were less than 0.003 mg/kg mercury concentration.

## STATISTICAL ANALYSIS

All analyses were conducted using R (version 3.6.2., 2023 R core team). An Analysis of Covariance (ANCOVA) was attempted to analyze the relationship between

mercury concentrations with body size between lake classes, but due to a statistically significant interaction term (i.e., the slope of the relationship between lake class and mercury was not consistent across body size), the ANCOVA was deemed unfit. Instead, a Linear Mixed Effect Model (LMM) was used with lake class as a fixed factor and lake trout body size as a covariate, a random slope for body size and a random intercept of lake class. An LMM allows easing of the assumption of independent observations (repeatedly sampling fish from a single lake) by accounting for that non-independence. The optimal model was chosen using stepwise deletion of random and fixed effects. To assess model fit, likelihood ratio tests were used, and it was determined that the best LMM had lake class and body size as fixed factors and a random slope and intercept for lake trout body size and lake class, respectively.

A principal component analysis (PCA) was used to assess the association between environmental variables, lake morphology, lake class, and mercury concentrations. Five variables were selected; dissolved organic carbon (DOC), pH, total dissolved phosphorus (TDP), and lake morphology (surface areas and maximum depth). Only maximum lake depth was retained for lake morphology variables as an initial scatterplot of all variables showed that lake area (ha) and maximum depth (m) were highly correlated. Environmental factors that were to be analyzed were chosen after they were assessed and plotted to ensure they are “normally” distributed then the data was standardized. A biplot of the PCA was then created to describe associations between all variables.

## RESULTS

There was a total of 64 lakes sampled and 2,867 samples analyzed across the lake classes. The average mercury concentration for lake trout increased with increasing lake class, but the standard deviation of mercury concentrations also increased as well (Table 4).

Table 4. Summary of lake class values (number of lakes and individual samples analyzed) and average mercury concentration with 95% quantile and standard deviation values.

Lake Class	Number of Lakes	Number of fish	Avg. Mercury Concentration ( $\mu\text{g/g}$ )	95% Quantile	Standard deviation of Hg
1	7	171	0.367	0.87	0.257
1.5	11	499	0.342	0.73	0.210
2	11	361	0.532	1.70	0.503
3	35	1836	0.519	1.47	0.459
Total	64	2867	0.479		

There was a significant effect of lake class (LMM,  $F_{3,116.49} = 3.12$ ,  $p = 0.029$ ) and body length (LMM,  $F_{1,113.45} = 558.36$ ,  $p < 0.0001$ ) on lake trout mercury concentrations. However, a significant interaction between body length and lake class (LMM,  $F_{3,104.04} = 5.92$ ,  $p = 0.0009$ ) suggests that increases in mercury concentrations with body size are not consistent across lake classes; mercury increased with body size fastest in Class 2 lakes, and slowest in Class 1.5 lakes (Figure 2). Slopes from the LMM suggest that a 500-mm fish is likely to have a mercury concentration of approximately  $0.35 \mu\text{g/g}$  regardless of what lake class they are in, but that fish larger than 750 mm in Class 2 lakes will have higher mercury concentrations than fish from other lake classes.

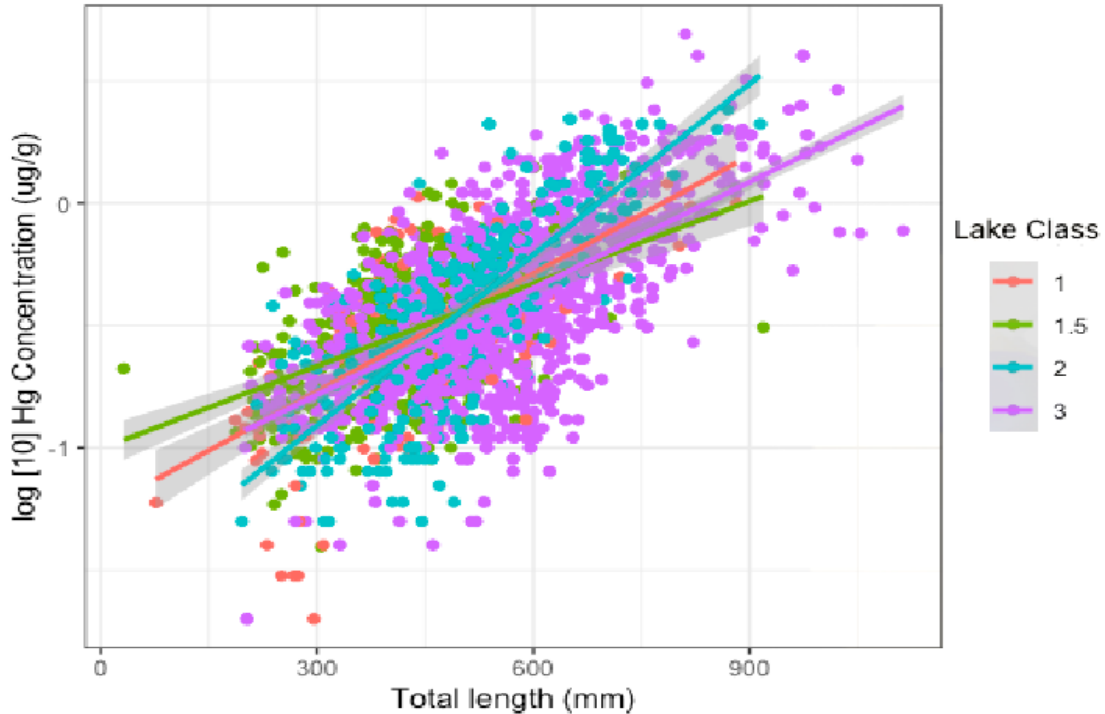


Figure 2. Comparison of log-transformed Hg concentration with total length across lake classes ( $R^2 = 0.481$ ).

In this study, environmental variables were found to have relationships with lake trout mercury concentration. Dissolved organic carbon (DOC) had the highest significantly positive relationship with an  $R^2$  value of 0.171 which explains 17.1% variation within the data (linear regression,  $F_{1,2816} = 581.8$ ,  $p < 0.001$ ), while pH had the least positive relationship, meaning a p value closest to 0.05 and only explaining 0.3% (linear regression,  $F_{1,2816} = 8.22$ ,  $p = 0.004$ ). Maximum depth explained 8.8% variation (linear regression,  $F_{1,2816} = 272$ ,  $p < 0.001$ ), and total dissolved phosphorus (TDP) explained 1.3% (linear regression,  $F_{1,2816} = 37.08$ ,  $p < 0.001$ ) with p values lower than 0.05 indicating there is a significant relationship between those variables and mercury concentrations but  $R^2$  values indicating that the relationship explains very little (Figure 3).

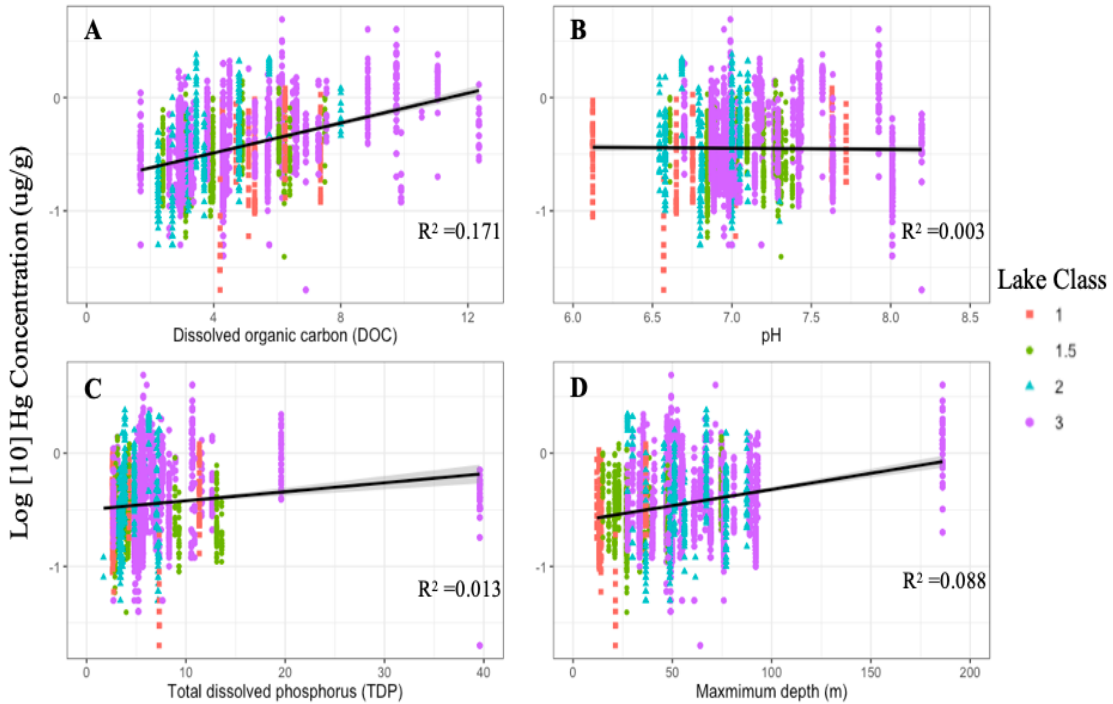


Figure 3. Comparison of the influence of environmental variables on mercury concentration across lake classes. A. Dissolved organic carbon (DOC) B. pH C. Total dissolve phosphorus D. Maximum depth (m).

A PCA plot was graphed to assess the association between lake classes environmental variables on mercury concentrations (Figure 4). The first two PC axes explained 65% of total variation. The first axis (PC1) shows a general association between all variables, showing that lakes with higher Hg have more complex food webs, are deeper, and higher in DOC, phosphorus and pH. The second axis (PC2) demonstrates that high DOC lakes have higher mercury concentrations. Figure 4 demonstrates there are two distinct groups, one corresponding to high DOC and higher Hg concentration, and the other group corresponding to deeper, higher pH and higher total phosphorus. Both groups tend to correspond to Class 3 lakes.

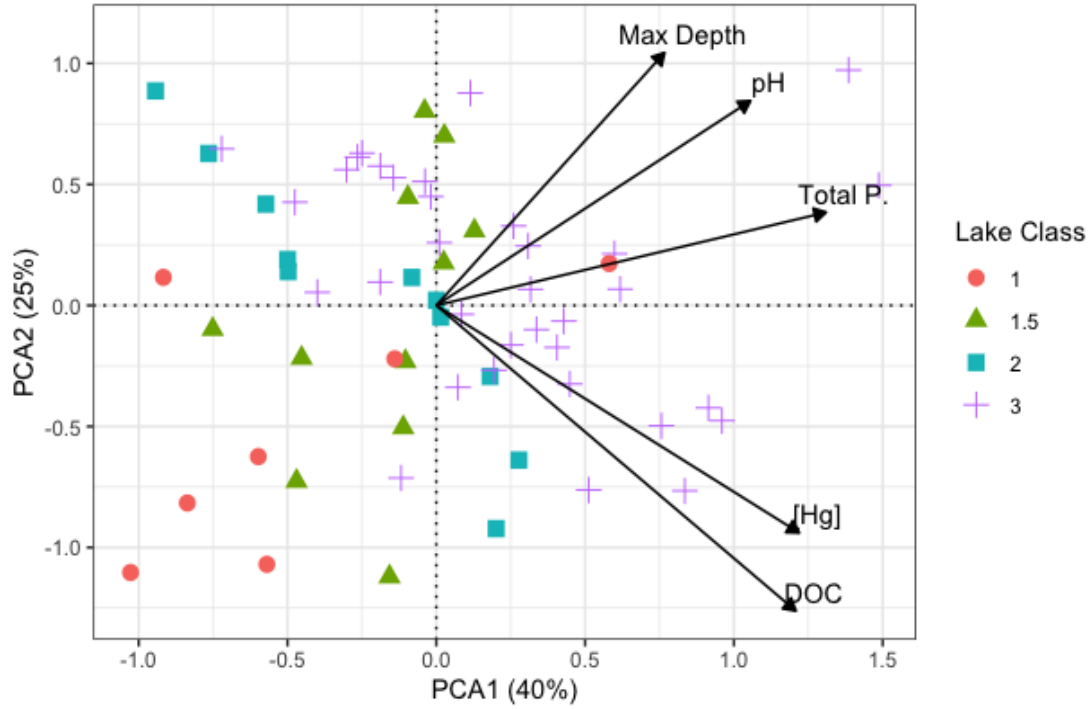


Figure 4. Principal component analysis (PCA) biplot of environmental variables and mercury concentration across lake classes.

## DISCUSSION

My results demonstrated a significant effect of body length and lake class on lake trout mercury concentration, but that increases in mercury concentrations with body size are not consistent across lake classes. This effect contradicts my original prediction that mercury concentrations would increase when aquatic food chains lengthen. When evaluating mean mercury concentrations for each lake class in a way similar to that of Rasmussen et al. (1990), my results show mercury concentrations closer to my predictions (Table 4; with the exception that Class 2 is slightly more elevated than Class 3). However, when body size is accounted for, these predictions were not supported. Further analysis of environmental variables demonstrates that assessing other environmental variables (DOC, pH, TDP, and maximum depth) can be useful when describing lake trout mercury concentrations across a large landscape.

According to early research on ecosystem behaviour of organic pollutants, such as that by Rasmussen et al. (1990) and Oliver and Niimi (1988) examining PCB levels, this study contradicts previous findings of contaminant biomagnification when aquatic food chains lengthen. Some differences between the Rasmussen et al. (1990) study are important to note. Previous studies assessed lake averages for all sampled fish rather than using body-size as a covariate within a lake. Contaminant levels tend to increase with fish size, and by using body size as a predictor aids in accounting for the size variation within a lake class. Additionally, samples from Rasmussen et al. (1990) were taken between 1978 and 1981, whereas those used in this study were taken between 1972 and 2022, with the majority coming from the last decade or two. Between 1990 and 2010, atmospheric mercury emissions declined by 85% in Canada, with the

reduction truly starting since the 1970s (MOECC 2022). Globally, mercury emissions remained stable between 1990s and 2000s. As of 2020 in Canada, mercury emissions decreased drastically respectively from 1990 levels, mostly due to a large reduction in the non-ferrous refining and smelting industry (ECCC 2022). The large decrease in mercury emissions over this time could be a factor into why this study's results did not reflect the same relationship seen between accumulation of contaminants and lake classes as Rasmussen et al. (1990) did.

My results indicate that both DOC and maximum lake depth are useful predictors of lake trout mercury concentrations. Linear regression demonstrated a strong relationship between DOC and mercury ( $R^2 = 0.171$ ; Figure 3 Panel A). Additionally, there was a close association between DOC and lake depth, with PC axis 2, describing DOC and lake depth, accounting for 25.9% of the overall model variation (17.1 and 8.8% respectively; Figure 4). Several studies have supported the positive relationship between DOC and fish mercury (Ullrich et al. 2001, Grigal 2002, Weiner et al. 2006, and Gonzalez-Raymat et al. 2017), and larger and deeper lakes can have lower mercury concentrations due to the lower methylation potential for cooler surface waters (Bodaly et al. 1993). Furthermore, it is likely that the association between DOC and lake depth is a function of water residency time and lake volume. Lakes with low DOC are commonly connected to relatively big, deep lakes (high water volume) with slow water turnover, whereas lakes with the greatest DOC are typically found in small, shallow (low water volume) lakes with shorter water residency times (Grigal 2002; Rasmussen et al. 1989). While counterintuitive, shorter water residence times may allow for a larger influence from watershed processes. The binding potential of mercury to terrestrial-



derived organic carbon and other trace metals, may lead to higher mercury concentrations for lakes and fish from shallower and smaller lakes, as was seen across the lakes within this study (Ullrich et al. 2001).

Phosphorus and pH both had a statistically significant relationship with mercury concentrations, yet with a combined  $R^2$  of  $<0.02$ , they are not useful predictors of lake trout mercury concentrations. This study found that pH alone explained only 0.3% ( $R^2 = 0.003$ ). The poor signal I saw between mercury and pH may be due to the complex, and oftentimes contradictory effects, of mercury concentrations and pH found within the literature. While many studies have suggested a positive relationship between acidified lakes and mercury levels (Greib et al. 1990; Suns and Hitchin 1990; Wiener et al. 1990), others have found that predatory fish did not have high levels of methylmercury and lake water acidity was not a major influence in methylation (Lucotte et al. 2016). The contrasting results require further investigation and consideration needs to be given to any number of possible factors that could impact results. This study only observed pH ranges from 6.123 to 8.195, while studies such as Suns and Hitchin (1990) studied lakes with a smaller pH range of 5.6 to 7.3, potentially explaining the differences in results. Phosphorus explains little variation but in particular follows the lake class gradient shown in the PCA (Figure 4); food web effects (i.e., lake class differences) may be masking any productivity effects that were anticipated. Similar to pH, there are conflicting reports on the effect of phosphorus on mercury concentrations. Since phosphorus is often related to lake productivity, it can expedite fish growth and reduce fish mercury through growth dilution (Rypel 2010). Other studies find that increased phosphorus may promote cyanobacterial growth, lake eutrophication, and organic

material (such as DOC) for mercury deposition in the watershed, which can lead to increased mercury within fish (Kruzweiser et al. 2008).

Overall, the mean mercury concentration in lake trout across all study lakes was 0.479 µg/g, with Class 2 and Class 3 lakes exceeding average concentrations (0.532 and 0.519 µg/g respectively). Class 2 and Class 3 values exceed what is deemed acceptable for human consumption, as mercury concentrations below 0.5 ppm (or 0.5 µg/g) are recommended under consumption guidelines (MOECC 2022). The total mean mercury concentration is just below the recommended concentration. Eating fish that contains mercury, a neurotoxin, can have serious health effects. By keeping fish consumption below advised limits, toxicity thresholds should not be reached, and symptoms of mercury poisoning should be avoided (MOECC 2022). Encouragingly, a whole ecosystem study demonstrated that when mercury deposition decreases, methylmercury levels in Northern pike (*Esox lucius*) soon followed (Blanchfield et al. 2021).

## CONCLUSION AND RECOMMENDATIONS

This study provides evidence that landscape and lake chemistry factors, such as pH, total dissolved phosphorus, and maximum lake depth, have an impact on the total mercury levels in top predatory fish. This study, however, does not support the use of lake classes to assess mercury levels, as the results did not confirm previous findings once fish body size was accounted for. Although our findings could not conclude the relationship between lake classes and mercury concentration, by exploring environmental variables it was concluded that DOC has a strong positive relationship (17.1%) with fish mercury concentration. While environmental variables collectively explained 27.5% of the variation in mercury concentrations, DOC was the most important environmental variable ( $R^2 = 0.17$ ), with lake maximum depth also explaining a statistically and biologically significant amount of variation in lake trout mercury concentrations ( $R^2 = 0.09$ ). This study finds that the environmental variables explored are the most important factors driving the results seen. To fully comprehend bioaccumulation and biomagnification and to assess the neurotoxic effects on human and wildlife health, it is crucial to continuously monitor mercury quantities in the environment and the wildlife we eat.

It is advised to conduct more research in order to better comprehend the environmental elements that affect the accumulation, methylation, and mobilization of mercury as well as to examine the precision and prospective applications of lake classes. It is advised that monitoring efforts be strengthened in order to validate mercury trends and produce data for management actions, such as issuing thorough fish consumption recommendations to safeguard human health. Additional research is required for

analysis and accuracy in order to fully comprehend the mechanisms causing mercury pollution in Ontario's inland lakes. Identifying variation in mercury due to the many factors of ecosystem and watershed variation can allow for more accurately estimated mercury concentrations of fish across large landscapes. We can hope that international efforts to reduce mercury risk, growing understanding of how mercury behaves in the environment, and actions on climate change will lower fish mercury levels.

## LITERATURE CITED

- Beamish, R.J. 1972. Design of a trap net for sampling shallow-water habitats. Technical Report, Fisheries Research Board of Canada. 205:14.
- Beckerman, A.P., Petchey, O.L., and Warren, P.H. 2006. Foraging biology predicts food web complexity. *Proc. Natl. Acad. Sci. U. S. A.* **103**(37): 13745–13749. doi:10.1073/pnas.0603039103.
- Bergstedt, R.A., Argyle, R.L., Seelye, J.G., Scribner, K.T., and Curtis, G.L. 2003. In situ determination of the annual thermal habitat use by lake trout (*Salvelinus namaycush*) in Lake Huron. *J. Great Lakes Res.* **29**(SUPPL. 1): 347–361. Elsevier. doi:10.1016/S0380-1330(03)70499-7.
- Berntssen, M.H.G., Aatland, A., and Handy, R.D. 2003. Chronic dietary mercury exposure causes oxidative stress, brain lesions, and altered behaviour in Atlantic salmon (*Salmo salar*) parr. *Aquat. Toxicol.* **65**(1): 55–72. doi:10.1016/S0166-445X(03)00104-8.
- Bigham, G.N., Murray, K.J., Masue-Slowey, Y., and Henry, E.A. 2017. Biogeochemical controls on methylmercury in soils and sediments: Implications for site management. *Integr. Environ. Assess. Manag.* **13**(2): 249–263. doi:10.1002/ieam.1822.
- Blanchfield, P.J., Rudd, J.W.M., Hrenchuk, L.E., Amyot, M., Babiarz, C.L., Beaty, K.G., Bodaly, R.A.D., Branfireun, B.A., Gilmour, C.C., Graydon, J.A., Hall, B.D., Harris, R.C., Heyes, A., Hintelmann, H., Hurley, J.P., Kelly, C.A., Krabbenhoft, D.P., Lindberg, S.E., Mason, R.P., Paterson, M.J., Podemski, C.L., Sandilands, K.A., Southworth, G.R., St Louis, V.L., Tate, L.S., and Tate, M.T. 2022. Experimental evidence for recovery of mercury-contaminated fish populations. *Nature* **601**(7891): 74–78. Springer US. doi:10.1038/s41586-021-04222-7.
- Blanchfield, P.J., Tate, L.S., Plumb, J.M., Acolas, M.L., and Beaty, K.G. 2009. Seasonal habitat selection by lake trout (*Salvelinus namaycush*) in a small Canadian shield lake: Constraints imposed by winter conditions. *Aquat. Ecol.* **43**(3): 777–787. doi:10.1007/s10452-009-9266-3.
- Bodaly, R.A., Rudd, J.W.m., and Fudge, R.J.P. 1993. Mercury concentrations in fish related to size of remote Canadian shield lakes. *Can. J. Fish. Aquat. Sci.* **50**: 980–987.
- Breton, B., Govoroun, M., and Mikolajczyk, T. 1998. GTH I and GTH II secretion profiles during the reproductive cycle in female rainbow trout: Relationship with pituitary responsiveness to GnRH-a stimulation. *Gen. Comp. Endocrinol.* **111**(1): 38–50. doi:10.1006/gcen.1998.7088.

- Cabana, G., Tremblay, A., Kalff, J., and Rasmussen, J.B. 1994. Pelagic food chain structure in Ontario lakes: a determinant of mercury levels in lake trout (*Salvelinus namaycush*). *Can. J. Fish. Aquat. Sci.* **51**(2): 381–389. doi:10.1139/f94-039.
- Celo, V., Lean, D.R.S., and Scott, S.L. 2006. Abiotic methylation of mercury in the aquatic environment. *Sci. Total Environ.* **368**(1): 126–137. doi:10.1016/j.scitotenv.2005.09.043.
- Chen, C.Y., Stemberger, R.S., Kamman, N.C., Mayes, B.M., and Folt, C.L. 2005. Patterns of Hg bioaccumulation and transfer in aquatic food webs across multi-lake studies in the northeast US. *Ecotoxicology* **14**(1–2): 135–147. doi:10.1007/s10646-004-6265-y.
- Christie, C.C., and Regier, H. A. 1988. Habitat and their relationship to measures of optima. *Can. J. Fish. Aquat. Sci.* **45**: 301–314.
- Coutant, C. 1977. Compilation of Temperature Preference Data. (998): Driscoll, C.T., Yan, C., Schofield, C.L., Munson, R., and Holsapple, J. 1994. Mercury cycle and fish in the Adirondack lakes. **28**(3).
- Crump, K.L., and Trudeau, V.L. 2009. Mercury-induced reproductive impairment in fish. *Environ. Toxicol. Chem.* **28**(5): 895–907. doi:10.1897/08-151.1.
- Dadswell, M.J. 1974. Distribution, ecology, and postglacial dispersal of certain crustaceans and fishes in eastern North America. *Carleton. Univ.* (September): 553. <http://en.scientificcommons.org/56343919>.
- Driscoll, C.T., Yan, C., Schofield, C.L., Munson, R., and Holsapple, J. 1994. Mercury cycle and fish in the Adirondack lakes. *Environ. Sci. Technol.* **28**(3).
- Eagles-Smith, C.A., Herring, G., Johnson, B., and Graw, R. 2016. Conifer density within lake catchments predicts fish mercury concentrations in remote subalpine lakes. *Environ. Pollut.* **212**: 279–289. doi:10.1016/j.envpol.2016.01.049.
- Environment and Climate Change Canada (ECCC). 2022. Emissions of harmful substances to air: Canadian environmental sustainability indicators. <https://www.canada.ca/en/environment-climate-change/services/environmental-indicators/emissions-harmful-substances-air.html> (online).
- Evans, D.O. 2007. Effects of hypoxia on scope-for-activity and power capacity of lake trout (*Salvelinus namaycush*). *Can. J. Fish. Aquat. Sci.* **64**(2): 345–361. doi:10.1139/F07-007.
- Evans, M.S., Lockhart, W.L., Doetzel, L., Low, G., Muir, D., Kidd, K., Stephens, G., and Delaronde, J. 2005. Elevated mercury concentrations in fish in lakes in the

- Mackenzie river basin: the role of physical, chemical, and biological factors. *Sci. Total Environ.* **351–352**: 479–500. doi:10.1016/j.scitotenv.2004.12.086.
- Evans, M.S., Noguchi, G.E., and Rice, C.P. 1991. The biomagnification of polychlorinated biphenyls, toxaphene, and DDT compounds in a Lake Michigan offshore food web. *Arch. Environ. Contam. Toxicol.* **20**(1): 87–93. doi:10.1007/BF01065333.
- Ferguson, R.G. 1958. The preferred temperature of fish and their midsummer distribution in temperate lakes and streams. *J. Fish. Res. Bd. Canada* **15**(4): 607–624.
- Fitzgerald, W.F., Engstrom, D.R., Mason, R.P., and Nater, E.A. 1998. The case for atmospheric mercury contamination in remote areas. *Environ. Sci. Technol.* **32**(1): 1–7. doi:10.1021/es970284w.
- Gandhi, N., Tang, R.W.K., Bhavsar, S.P., and Arhonditsis, G.B. 2014. Fish mercury levels appear to be increasing lately: a report from 40 years of monitoring in the province of Ontario, Canada. *Environ. Sci. Technol.* **48**(10): 5404–5414. doi:10.1021/es403651x.
- Garcia, E., and Carignan, R. 2000. Mercury concentrations in northern pike (*Esox lucius*) from boreal lakes with logged, burned, or undisturbed catchments. *Can. J. Fish. Aquat. Sci.* **57**(S2): 129–135. doi:10.1139/cjfas-57-s2-129.
- Giacomini, H.C., Shuter, B.J., and Lester, N.P. 2013. Predator bioenergetics and the prey size spectrum: do foraging costs determine fish production? *J. Theor. Biol.* **332**: 249–260. doi:10.1016/j.jtbi.2013.05.004.
- Gibson, E.S., and Fry, F.E.J. 1954. Performance of the lake trout (*Salvelinus namaycush*) at various levels of temperature and oxygen pressure. *Can. J. Zool.* **32**(3): 252–260. doi:10.1139/z54-025.
- Gonzalez-Raymat, H., Liu, G., Liriano, C., Li, Y., Yin, Y., Shi, J., Jiang, G., and Cai, Y. 2017. Elemental mercury: its unique properties affect its behavior and fate in the environment. *Environ. Pollut.* **229**: 69–86. Elsevier Ltd. doi:10.1016/j.envpol.2017.04.101.
- Government of Canada. 2015. Phosphorus in aquatic ecosystems. <https://www.canada.ca/en/environment-climate-change/services/freshwater-quality-monitoring/publications/phosphorus-aquatic-ecosystems/chapter-1.html>. (online)
- Grieb, T.M., Bowie, G.L., Driscoll, C.T., Gloss, S.P., Schofield, C.L., and Porcella, D.B. 1990. Factors affecting mercury accumulation in fish in the upper michigan peninsula. *Environ. Toxicol. Chem.* **9**(7): 919–930. doi:10.1002/etc.5620090710.

- Grigal, D.F. 2002. Inputs and outputs of mercury from terrestrial watersheds. *Environ. Rev.* **10**(1): 1–39. doi:10.1139/a01-013.
- Gunn, J.M., and Pitblado, J.R. 2004. Boreal shield watersheds: lake trout ecosystems in a changing environment.
- Guzzo, M.M., Blanchfield, P.J., and Rennie, M.D. 2017. Behavioral responses to annual temperature variation alter the dominant energy pathway, growth, and condition of a cold-water predator. *Proc. Natl. Acad. Sci. U. S. A.* **114**(37): 9912–9917. doi:10.1073/pnas.1702584114.
- Johnson, L. 1972. Keller Lake: Characteristics of a culturally unstressed salmonid community. *J. Fish. Res. Board Canada* **29**(6): 731–740. doi:10.1139/f72-118.
- Kamman, N.C., Burgess, N.M., Driscoll, C.T., Simonin, H.A., Goodale, W., Linehan, J., Estabrook, R., Hutcheson, M., Major, A., Scheuhammer, A.M., and Scruton, D.A. 2005. Mercury in freshwater fish of northeast North America - A geographic perspective based on fish tissue monitoring databases. *Ecotoxicology* **14**(1–2): 163–180. doi:10.1007/s10646-004-6267-9.
- Kamman, N.C., Lorey, P.M., Driscoll, C.T., Estabrook, R., Major, A., Pientka, B., and Glassford, E. 2003. Assessment of mercury in waters, sediments, and biota of New Hampshire and Vermont lakes, USA, sampled using a geographically randomized design. *Environ. Toxicol. Chem.* **23**(5): 1172–1186. doi:10.1897/03-170.
- Kerr, S.R. 1971. A simulation model of lake trout growth. *J. Fish. Res. Board Canada* **28**(6): 815–819. doi:10.1139/f71-122.
- Kidd, K.A., Muir, D.C.G., Evans, M.S., Wang, X., Whittle, M., Swanson, H.K., Johnston, T., and Guildford, S. 2012. Biomagnification of mercury through lake trout (*Salvelinus namaycush*) food webs of lakes with different physical, chemical and biological characteristics. *Sci. Total Environ.* **438**: 135–143. Elsevier B.V. doi:10.1016/j.scitotenv.2012.08.057.
- Kiriluk, R.M., Servos, M.R., Whittle, D.M., Cabana, G., and Rasmussen, J.B. 1995. Using ratios of stable nitrogen and carbon isotopes to characterize the biomagnification of DDE, mirex, and PCB in a Lake Ontario pelagic food web. *Can. J. Fish. Aquat. Sci.* **52**(12): 2660–2674. doi:10.1139/f95-855.
- Konkle, B.R., and Sprules, W.G. 1986. Planktivory by stunted lake trout in an Ontario lake. *Trans. Am. Fish. Soc.* **115**(4): 515–521. doi:10.1577/1548-8659(1986)115<515:pblti>2.0.co;2.
- Kreutzweiser, D.P., Hazlett, P.W., and Gunn, J.M. 2008. Logging impacts on the biogeochemistry of boreal forest soils and nutrient export to aquatic systems: a review. *Environ. Rev.* **16**(July 2014): 157–179. doi:10.1139/A08-006.



- Lavoie, R.A., Amyot, M., and Lapierre, J.F. 2019. Global meta-analysis on the relationship between mercury and dissolved organic carbon in freshwater environments. *J. Geophys. Res. Biogeosciences* **124**(6): 1508–1523. doi:10.1029/2018JG004896.
- Lindsey, C.C. 1964. Problems in zoogeography of the lake trout (*Salvelinus namaycush*). *J. Fish. Res. Board Canada*. 21(5):977-994.
- Lourie, B. 2003. Mercury in the environment. Pollution Probe, Toronto. 92 pp. <http://udel.edu/~inamdar/nps2007/primer.pdf>.
- Lucotte, M., Paquet, S., and Moingt, M. 2016. Climate and Physiography Predict Mercury concentrations in game fish species in Quebec lakes better than anthropogenic disturbances. *Arch. Environ. Contam. Toxicol.* **70**(4): 710–723. Springer US. doi:10.1007/s00244-016-0261-0.
- Magnuson, J.J., Crowder, L.B., and Medvick, P.A. 1979. Temperature as an ecological resource. *Integr. Comp. Biol.* **19**(1): 331–343. doi:10.1093/icb/19.1.331.
- Martin, N. V. 1952. A study of the lake trout, *Salvelinus Namaycush*, in two Algonquin Park, Ontario Lakes. *Trans. Am. Fish. Soc.* 81(1): 111-137. doi.org/10.1577/1548-8659(1951)81[111:ASOTLT]2.0.CO;2.
- Martin, N. V. 1966. The significance of food habits in the biology, exploitation, and management of Algonquin Park, Ontario, Lake Trout. *Trans. Am. Fish. Soc.* **95**(4): 415–422. doi:10.1577/1548-8659(1966)95[415:tsofhi]2.0.co;2.
- Martin, N., and Olver, C. 1980. The Lake Charr, *Salvelinus manaycush*. *Trans. Am. Fish. Soc.* **86**: 231–244.
- Mason, R.P. 2013. Trace metals in aquatic systems. *Trace Met. Aquat. Syst.* (March): 1–431. doi:10.1002/9781118274576.
- McMurtry, M.J., Wales, D.L., Scheider, W.A., Beggs, G.L., and Dimond, P.E. 1989. Relationship of mercury concentrations in lake trout (*Salvelinus namaycush*) and smallmouth bass (*Micropterus dolomieu*) to the physical and chemical characteristics of Ontario lakes. *Can. J. Fish. Aquat. Sci.* **46**(3): 426–434. doi:10.1139/f89-057.
- Ministry of the Environment and Climate Change (MOECC). 2022. Guide to eating Ontario fish guide. <https://www.ontario.ca/page/guide-eating-ontario-fish>. (online)
- Niimi, A.J., and KISSOON, G.P. 1994. Evaluation of the critical body burden concept based on inorganic and organic mercury toxicity to rainbow trout (*Oncorhynchus mykiss*). *Arch. Environ. Contam. Toxicol.* **26**(2): 169–178. doi:10.1007/BF00224801.

- Oliver, B.G., and Niimi, A.J. 1988. Trophodynamic analysis of polychlorinated biphenyl congeners and other chlorinated hydrocarbons in the Lake Ontario ecosystem. *Environ. Sci. Technol.* **22**(4): 388–397. doi:10.1021/es00169a005.
- Olson, R.A., Winter, J.D., Nettles, D.C., and Haynes, J.M. 1988. Resource partitioning in summer by salmonids in South-Central Lake Ontario. *Trans. Am. Fish. Soc.* **117**(6): 552–559. doi:10.1577/1548-8659(1988)117<0552:rpisbs>2.3.co;2.
- Ontario Ministry of Natural Resources (OMNR). 2009. Fisheries Management Plan for Fisheries Management Zone 6 August 2009 Ontario Ministry of Natural Resources.
- Page, L., and Burr, B. 1991. Peterson Field Guide to Freshwater Fishes of North America North of Mexico. 432 pp.
- Pazzia, I., Trudel, M., Ridgway, M., and Rasmussen, J.B. 2002. Influence of food web structure on the growth and bioenergetics of lake trout (*Salvelinus namaycush*). *Can. J. Fish. Aquat. Sci.* **59**(10): 1593–1605. doi:10.1139/f02-128.
- Plumb, J.M., and Blanchfield, P.J. 2009. Performance of temperature and dissolved oxygen criteria to predict habitat use by lake trout (*Salvelinus namaycush*). *Can. J. Fish. Aquat. Sci.* **66**(11): 2011–2023. doi:10.1139/F09-129.
- Polis, G.A., and Strong, D.R. 1996. Food web complexity and community dynamics. *Am. Nat.* **147**(5): 813–846. doi:10.1086/285880.
- Portner, H.O., and Knust, R. 2007. Climate change affects marine fishes through the oxygen limitation of thermal tolerance. *Science* (80-. ). **315**: 95–97. doi:10.1259/0007-1285-53-633-920-b.
- Rasmussen, J.B., Godbout, L., and Schallenberg, M. 1989. The humic content of lake water and its relationship to watershed and lake morphometry. *Am. Soc. Limology Ocean.* **34**(7): 1336–1343.
- Rasmussen, J.B., Rowan, D.J., Lean, D.R.S., and Carey, J.H. 1990. Food chain structure in Ontario lakes determines PCB levels in lake trout (*Salvelinus namaycush*) and other pelagic fish. *Can. J. Fish. Aquat. Sci.* **47**(10): 2030–2038. doi:10.1139/f90-227.
- Rennie, M.D., Kennedy, P.J., Mills, K.H., Rodgers, C.M.C., Charles, C., Hrenchuk, L.E., Chalanchuk, S., Blanchfield, P.J., Paterson, M.J., and Podemski, C.L. 2019. Impacts of freshwater aquaculture on fish communities: A whole-ecosystem experimental approach. *Freshw. Biol.* **64**(5): 870–885. doi:10.1111/fwb.13269.
- Riscassi, A.L., and Scanlon, T.M. 2011. Controls on stream water dissolved mercury in three mid-Appalachian forested headwater catchments. *Water Resour. Res.* **47**(12): 1–42. doi:10.1029/2011WR010977.

- Ryder, R.A., and Johnson, L. 1972. The future of salmonid communities in North American oligotrophic lakes. *J. Fish. Res. Board Canada* **29**(6): 941–949. doi:10.1139/f72-137.
- Rypel, A.L. 2010. Mercury concentrations in lentic fish populations related to ecosystem and watershed characteristics. *Ambio* **39**(1): 14–19. doi:10.1007/s13280-009-0001-z.
- Sandstorm, S., Rowson, M., and Lester, N. 2011. Ministry of Natural Resources Ontario: Manual of instructions for broad-scale fish community monitoring using North American (NA1) and Ontario small mesh (ON2) gillnets. Ontario Ministry of Natural Resources. Peterborough, Ontario.
- Sandstorm, S., Rowson, M., and Lester, N. 2013. Ministry of Natural Resources Ontario: Manual of instructions for broad-scale fish community monitoring using North American (NA1) and Ontario small mesh (ON2) gillnets. . Ontario Ministry of Natural Resources. Peterborough, Ontario.
- Scott, W.B., and Crossman, E.J. 1973. *Freshwater Fishes of Canada*. Bulletin 184. Fisheries Research Board of Canada. *Int. Rev. der gesamten Hydrobiol. und Hydrogr.* **61**(1): 966. doi:10.1002/iroh.19760610109.
- Sellers, T.J., Parker, B.R., Schindler, D.W., and Tonn, W.M. 1998. Pelagic distribution of lake trout (*Salvelinus namaycush*) in small Canadian Shield lakes with respect to temperature, dissolved oxygen, and light. *Can. J. Fish. Aquat. Sci.* **55**(1): 170–179. doi:10.1139/f97-232.
- Stoken, O.M., Riscassi, A.L., and Scanlon, T.M. 2016. Association of dissolved mercury with dissolved organic carbon in U.S. rivers and streams: The role of watershed soil organic carbon. *J. Am. Water Resour. Assoc.* **52**: 3040–3051. doi:10.1111/j.1752-1688.1969.tb04897.x.
- Streets, D.G., Zhang, Q., and Wu, Y. 2009. Projections of global mercury emissions in 2050. *Environ. Sci. Technol.* **43**(8): 2983–2988. doi:10.1021/es802474j.
- Suns, K., and Hitchin, G. 1990. Interrelationships between mercury levels in yearling yellow perch, fish condition and water quality. *Water. Air. Soil Pollut.* **50**(3–4): 255–265. doi:10.1007/BF00280627.
- Swanson, H.K., and Kidd, K.A. 2010. Mercury concentrations in arctic food fishes reflect the presence of anadromous arctic charr (*Salvelinus alpinus*), species, and life history. *Environ. Sci. Technol.* **44**(9): 3286–3292. doi:10.1021/es100439t.
- Tibbits, W.T. 2007. The behaviour of lake trout (*Salvelinus namaycush*) in oostego lake: A documentation of the strains, movements and the natural reproduction of lake trout under present conditions. State University College at Oneota. 1–65

- Trippel, E.A., and Bearnish, F.W.H. 1993. Multiple trophic level structuring in *Salvelinus- Coregonus* assemblages in Boreal forest lakes. **50**.
- Trudel, M., and Rasmussen, J.B. 1997. Modeling the elimination of mercury by fish. *Environ. Sci. Technol.* **31**(6): 1716–1722. doi:10.1021/es960609t.
- Ullrich, S.M., Tanton, T.W., and Abdrashitova, S.A. 2001. Mercury in the aquatic environment: a review of factors affecting methylation. *Crit. Rev. Environ. Sci. Technol.* **31**(3): 241–293. doi:10.1080/20016491089226.
- Uusi-Heikkilä, S., Wolter, C., Klefoth, T., and Arlinghaus, R. 2008. A behavioral perspective on fishing-induced evolution. *Trends Ecol. Evol.* **23**(8): 416–419. doi:10.1016/j.tree.2008.04.011.
- Vander Zanden, M.J., and Rasmussen, J.B. 1996. A trophic position model of pelagic food webs : impact on contaminant bioaccumulation in lake trout. *Ecol. Soc. Am.* **66**(4): 451–477.
- Ward, D.M., Nislow, K.H., Chen, C.Y., and Folt, C.L. 2010. Rapid, efficient growth reduces mercury concentrations in stream-dwelling Atlantic salmon. *Trans. Am. Fish. Soc.* **139**(1): 1–10. doi:10.1577/t09-032.1.
- Werner, E.E., and Gilliam, J.F. 1984. The ontogenetic niche and species interactions in size-structured populations. *Annu. Rev. Ecol. Syst.* Vol. 15 (November 2003): 393–425. doi:10.1146/annurev.es.15.110184.002141.
- Wiener, J.G., Cope, W.G., and Rada, R.G. 1990. Mercury accumulation in yellow perch in Wisconsin seepage lakes: relation to lake characteristics. *Environ. Toxicol. Chem.* **9**(7): 931–940. doi:10.1002/etc.5620090711.
- Wiener, J.G., Knights, B.C., Sandheinrich, M.B., Jeremiason, J.D., Brigham, M.E., Engstrom, D.R., Woodruff, L.G., Cannon, W.F., and Balogh, S.J. 2006. Mercury in soils, lakes, and fish in Voyageurs National Park (Minnesota): importance of atmospheric deposition and ecosystem factors. *Environ. Sci. Technol.* **40**(20): 6261–6268. doi:10.1021/es060822h.
- Wren, C.D., Scheider, W.A., Wales, D.L., Muncaster, B.W., and Gray, I.M. 1991. Relation between mercury concentrations in walleye (*Stizostedion vitreum vitreum*) and northern pike (*Esox lucius*) in Ontario lakes and influence of environmental factors. *Can. J. Fish. Aquat. Sci.* **48**: 132–139.

## APPENDICES

## APPENDIX I

Table A1. Summary of study lakes.

Lake Names	Lake Classes and Number of Samples				Total
	1	1.5	2	3	
223	31				31
224		144			144
239				21	21
260	22				22
373		59			59
375		65			65
382	27				27
442		24			24
468				49	49
626	30				30
Arrow Lake				90	90
Aylen Lake			48		48
Bark Lake			24		24
Bear Lake				20	20
Bella Lake			31		31
Bending Lake			10		10
Black Sturgeon Lake				28	28
Burchell Lake		41			41
Carling Lake				18	18
Clear (Watt) Lake				36	36
Cliff Lake	17				17
Cobre Lake			2		2
Cry Lake		43			43
Crystal Lake				60	60
Eels Lake			22		22
Emerald Lake			50		50
Eva Lake				50	50
Fletcher Lake	10				10
Grouse Lake		14			14
Indian Lake				5	5
Kashabowie Lake				2	2
Kawagama Lake			74		74
Lake Bernard				16	16
Lake Joseph				138	138
Lake Manitou				184	184

Lake Muskoka				86	86
Lake Rosseau				116	116
Lake Temagami				68	68
Larder Lake				67	67
Long Lake				74	74
Longlegged Lake				28	28
Lower Manitou Lake				25	25
Mameigwess Lake				65	65
McKenzie Lake		18			18
Muskrat Lake				42	42
North Lake	20				20
Northern Light Lake				14	14
Nym Lake				6	6
Obonga Lake				2	2
Opeongo Lake		47			47
Pickereel Lake				80	80
Round Lake				70	70
Savant Lake				10	10
Skeleton Lake				76	76
Smoke Lake			35		35
Squeers Lake	26				26
Sturgeon Lake				15	15
Titmarsh Lake				76	76
Trout Lake				39	39
Trout Lake				86	86
Twelve Mile Lake				74	74
Twinhouse Lake		18			18
Walotka Lake		45			45
Watabeag Lake	34				34
Total	171	499	361	1836	2867

## APPENDIX II

Table A2. Summary of analyzed samples.

---

Lake Classes	Number of Lakes	
	Sampled	Samples Analyzed
1	7	171
1.5	11	499
2	11	361
3	35	1836
Total	64	2867

---